

GIOmum Line Premium Warm

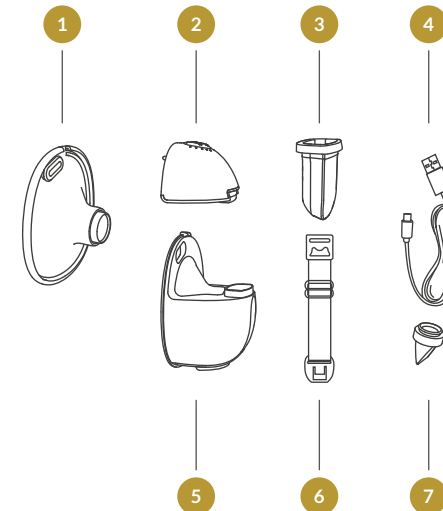
Double wearable electric breast pump
with warm compress function

USER MANUAL

Read this user manual before using your breast pump,
and keep the user manual for future reference.

Product structure diagram

01

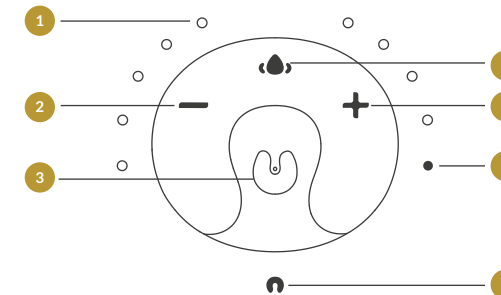


Parts list:

- | | |
|----------------------|-------------------------|
| 1 Flange | 4 USB Charging Cable |
| 2 Pump Motor | 5 Milk Collector |
| 3 Silicone Diaphragm | 6 Bra Adjustment Buckle |
| | 7 Valve |

Description of led display and button function

02



- 9 lights correspond to 9 expression levels (from left to right)
- Level down button
- Power button/ Mode selection button
- Hot compress button
- Level up button
- Hot compress indicator
- Power indicator

What's in the box

- Flange • Pump Motor • Silicone Diaphragm • Valve
- USB Charging Cable • Milk Collector • Bra Adjustment Buckle

Assembly

03

To assemble the pump, follow the steps below.

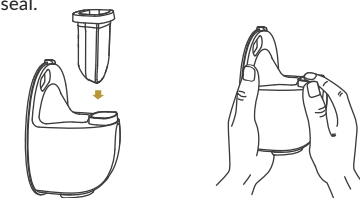
BE ADVISED ⚠

- Make sure that you clean the pump as instructed in this user manual.
- Make sure that you assemble the pump correctly as instructed in this user manual.
- To avoid leakage, remove the residue around the rim before assembling.
- Wash your hands thoroughly before assembling the clean components.

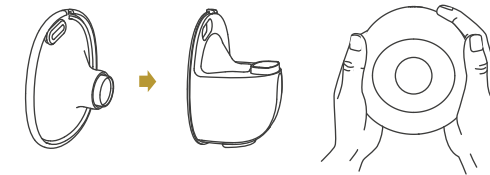
- Mount the valve onto the milk collector, pay attention to the angle at which it is mounted.



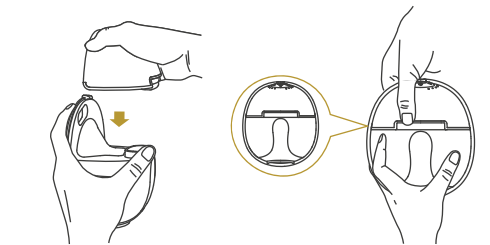
- Put the silicone diaphragm into the milk collector and press it with your hands to make the edges fasten tightly to ensure a perfect seal.



- To mount the flange on milk collector, make sure to align the diversion groove on the flange with the backflow groove on the milk collector. Make sure that the magnetic element on the flange is aligned with the slot of the magnetic element on the milk collector, and then press the edges with both hands to ensure the seal is in place.



- Mount the main body of the breast pump onto the milk collector, align the notch under the main body with the silicone diaphragm, and assemble it downward to fit the milk collector to ensure a complete seal.



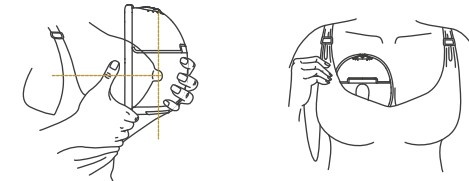
BE ADVISED ⚠

The breast pump does not work during charging.

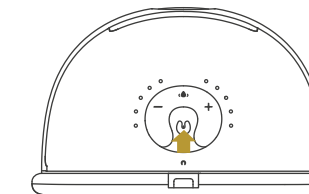
Pumping guide

05

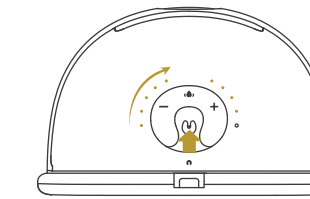
- Press the flange firmly against your breast, leave no gaps and make sure your nipples are centered. Keep it upright. Be careful not to distort the position of the device and your chest, otherwise the breast pump will not have suction.



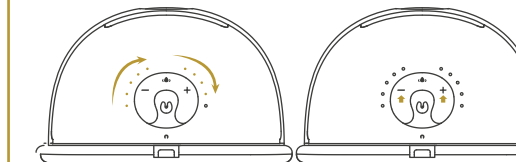
- Long press the power button to start the breast pump until the screen lights up.



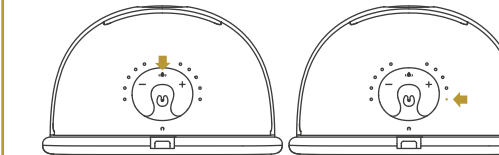
- Short press the "⏻" button after the breast pump turns on to switch between modes. Using this button you can switch between two different modes (expression mode, massage mode). The indicator lamp flashes when in massage mode, and is stays lit up when in expression mode.



- There are 9 levels available in each mode. Each light corresponds to one of the 9 expression levels (Increase from left to right level). You can select the suction level that you find comfortable by short pressing the "+" button to level up and "-" button to level down.



- Short press the "⚡" button to turn on/off the hot compress function. When the hot compress function is turned on, the hot compress indicator is on (flashing indicates it is warming up, continuous light indicates it is keeping warm). If the hot compress indicator is not on at this time, check whether the magnetic element of the flange is aligned with the pump motor. After using the hot compress function, short press the "⚡" button; if the hot compress indicator does not light up, it means this function is turned off.



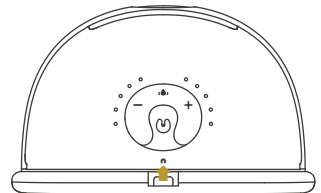
- Long press the power button "⏻" to turn off the breast pump.



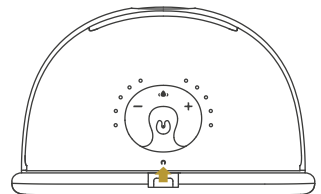
Tips:

- This model has a built-in memory function; when you turn on the device, it automatically enters the most recently used stimulation mode and suction level.
- The breast pump will stop automatically after 20 minutes of operating.

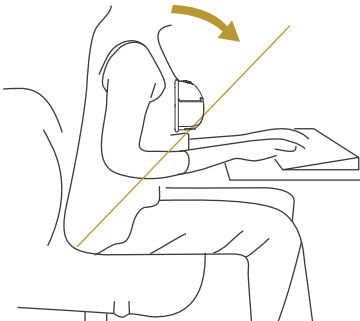
1. While using the breast pump, when the device is fully charged, the power indicator will be green and stay on; when the power level is low, the power indicator will turn red. Charge the device in time.



2. The device cannot be used while charging, at this time the display interface only shows the current power level. During charging, the power indicator will flash red, the green light will flash when the device is almost fully charged, and it will stay on when fully charged.



Relax and sit in a comfortable chair, then lean slightly forward (use a cushion for back support). Make sure to keep the breast pump and breast cup upright.



Breastfeeding posture

Cleaning & maintenance

	First Time Use	After Each Use
Pump Body	Turn on the pump by pressing the power button.	Wipe with a clean damp cloth with 70% ethyl alcohol or isopropyl alcohol as needed. Do not immerse the breast pump in water.
Flange, Silicone Diaphragm, Valve and Milk Collector	Boil in water for 5 minutes. Do not put the following parts into a microwave: Flange, Silicone Diaphragm, Valve and Milk Collector	Clean with mild dishwashing detergent or clean water.

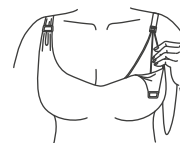
BE ADVISED ⚠

- Be careful when dismantling and cleaning the valve; if the valve is damaged, the breast pump will not work properly.
- To clean the valve, please rub it gently in warm water with a few drops of cleaning detergent. Do not insert any objects into the valve as it might damage the device.

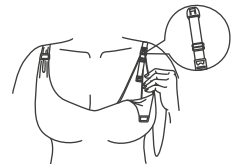
Cleaning by hand

- Place breast pump parts in a clean basin used only for infant feeding items. Do not place the breast pump parts directly in the sink.
- Add detergent and hot water to the basin.
- Scrub items using a clean brush used only for infant feeding items.
- Rinse by holding items under running water, or by submerging them in clean water in a separate basin.
- Air-dry thoroughly. Place the breast pump parts, the basin, and the bottle brush on a clean, unused dish towel or paper towel in an area protected from dirt and dust. Do not use a dish towel to rub or pat the items dry.
- Clean the basin and the bottle brush. Rinse them well and allow them to air-dry after each use. Wash them by hand at least every few days.

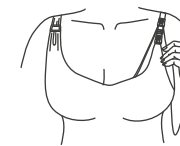
Adjust the length of your bra straps in order to make suction more comfortable. Hang one end of the bra adjustment buckle on the inside buckle of the nursing bra. The length of the bra can be adjusted by hanging the nursing bra buckle on the other end of the bra adjustment buckle.



Picture 1



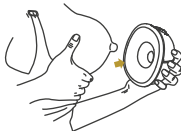
Picture 2



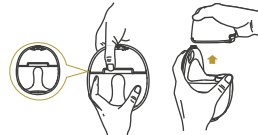
Picture 3

After you finish pumping, remove the breast pump from the breast. Keep the breast pump upright and remove the motor part. Hold the milk collector to pour the breast milk into the bottle. Make sure the milk collector gap of the breast cup is aligned with the mouth of the bottle to prevent spilling the breast milk.

1. When you finish expressing, press the power button to turn the device off and break the seal between the breast and the pump funnel with yourfinger, and then carefully remove the pump from your breast.



2. Separate the bottle from the pump motor to prepare it for feeding/storage. Clean the other used parts p ursuant to the instructions.



3. Pour the milk into the bottle; make sure it is aligned with the mouth of the bottle.



Storing breast milk

1. Only store breast milk collected using sterilized breast pumps.
2. The extracted milk can be placed in a clean and sterilized milk storage bag or a milk bottle with a sealing cushion, and immediately placed in the refrigerator.

How to store breast milk

1. Do not freeze breast milk more than once.
2. Do not mix fresh breast milk with frozen breast milk.
3. Be sure to discard leftover breast milk after feeding.
4. The extracted milk can be stored in the refrigerator for 48 hours or in the freezer for up to three months. Label the milk bottle or the milk storage bag with a clearly marked date and time.

How to thaw breast milk

Place the frozen breast milk in the refrigerator compartment overnight to thaw. If you need to use frozen milk urgently, you can use a bowl of hot water to thaw breast milk. After thawing breast milk, it must be consumed within 24 hours.

How to warm breast milk

3. Place the baby bottle in a bowl of hot water or heat the breast milk safely and quickly using a bottle and food warmer.
4. Be advised! Before feeding your baby, make sure to check the temperature of the breast milk.
5. Do not use a microwave or an oven to warm breast milk, as this may destroy important nutrients and antibodies.

6. Additionally, uneven heating may cause partial overheating of the liquid, which may cause burns.
7. Do not immerse the milk storage bottle in boiling water to heat, as it may rupture or crack.

innogio

Manufactured in China for INNOGIO sp. z o.o.
Ostródzka street 74H, 03-289 Warsaw, Poland

www.innogio.com

@innogio.official @innogio_com

