

# GIOmum Line Discreet

Wearable electric breast pump

## USER MANUAL

Read this user manual before using your wearable breast pump, and keep the user manual for future reference.

### Product description

01

Firstly, the breast pump can simulate the sucking pattern of an infant, assist in sucking the breast, promote pituitary secretion of prolactin, and stimulate the secretion of milk from the breast to increase milk production, which can help meet the needs of your infant.

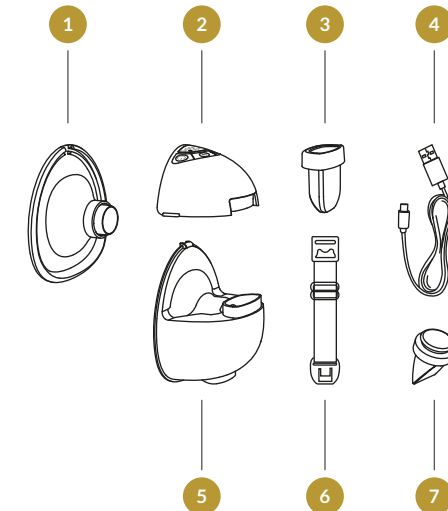
Secondly, the breast pump can promote the contraction of the breast epithelium to promote the ejection of milk from the breast ducts, ensure the emptying of the breast, and alleviate breast engorgement. Additionally, regular use of the breast pump can promote the suction of excess milk from the breast ducts, which can help prevent acute mastitis.

Thirdly, using the breast pump can improve the rate of direct breastfeeding and increase the confidence of mothers in breastfeeding, which is beneficial to both mothers and infants.

Fourthly, this device is suitable for personal use at home and is not recommended for use as an auxiliary tool by medical institutions.

### Product structure diagram

02

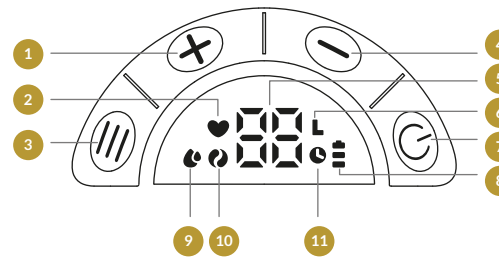


#### Parts list:

- |                      |                         |
|----------------------|-------------------------|
| 1 Flange             | 4 USB Charging Cable    |
| 2 Pump Motor         | 5 Milk Collector        |
| 3 Silicone Diaphragm | 6 Bra Adjustment Buckle |
|                      | 7 Valve                 |

### Description of led display and button function

03



- |   |                                       |
|---|---------------------------------------|
| 1 Level up button                         | 7 Power button/<br>Mode switch button |
| 2 Stimulation mode                        | 8 Power display                       |
| 3 Pause/ Start button                     | 9 Expression mode                     |
| 4 Level down button                       | 10 Massage mode                       |
| 5 Level display/<br>Time display (minute) | 11 Clock icon                         |
| 6 Level symbol                            |                                       |

### Assembly

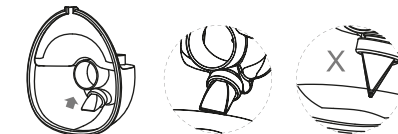
04

#### To assemble the pump, follow the steps below.

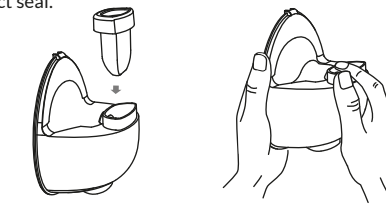
#### BE ADVISED ⚠

- Make sure that you clean the pump as instructed in this user manual.
- Make sure that you assemble the pump correctly as instructed in this user manual.
- To avoid leakage, remove the residue around the rim before assembling.
- Wash your hands thoroughly before assembling the clean components.

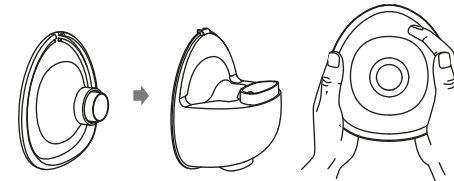
- Mount the valve onto the milk collector, pay attention to the angle at which it is mounted.



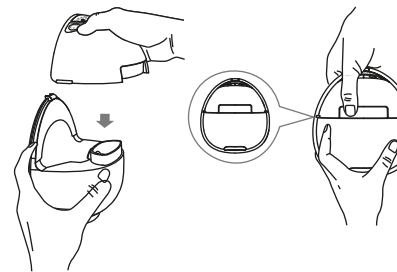
- Put the silicone diaphragm into the milk collector and press it with your hands to make the edges fasten tightly to ensure a perfect seal.



- To mount the flange on milk collector, make sure to align the diversion groove on the flange with the backflow groove on the milk collector, and then press the edges with both hands to ensure the seal is in place.



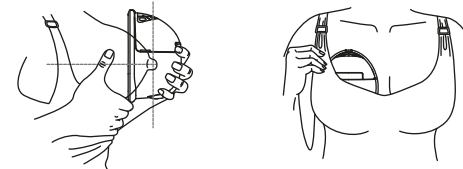
- Mount the main body of the breast pump onto the milk collector, align the notch under the main body with the silicone diaphragm, and assemble it downward to fit the milk collector to ensure a complete seal.



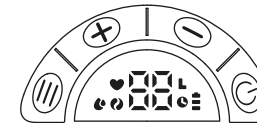
### Pumping guide

06

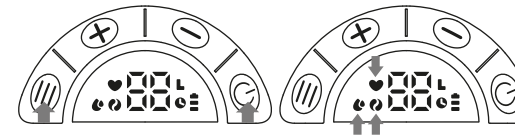
- Press the flange firmly against your breast, leave no gaps and make sure your nipples are centered. Keep it upright. Be careful not to distort the position of the device and your chest, otherwise the breast pump will not have suction.



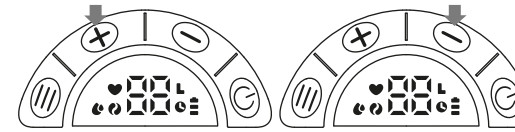
- Long press the power button to start the breast pump until the screen lights up.



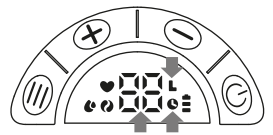
- You can start or pause the operation of the breast pump by short pressing the "≡" button. Short press the "⏻" button to switch modes after the breast pump starts. Using this button you can switch between three different modes (expression mode, stimulation mode and massage mode). When "❤" is lit up, it means the device is in expression mode; When "♥" is lit up, it means the stimulation mode is on; When "⦿" is lit up, it means the massage mode is on.



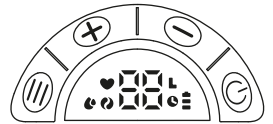
- There are 9 levels available in each mode. You can select the suction level that you find comfortable by short pressing the "+" button to level up and "-" button to level down.



5. When the breast pump is switched on, if you press the button, the screen will show the level of the current mode. The level symbol "L" on the display screen will light up at the same time. If you do not press the button within 2 seconds, the level display on the screen will then switch time display, and the clock icon "⌚" on the display screen will light up at the same time.



6. Long press the power button "⏻" to turn off the breast pump.



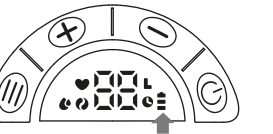
**Tips:**

1. This model has a built-in memory function, when you turn on the device, it automatically enters the most recently used stimulation mode and suction level.
2. When the operation of the device is paused and no button is pressed within 5 minutes, the breast pump will turn off automatically.
3. The breast pump will stop automatically after 20 minutes of operating.

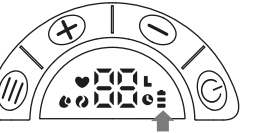
**LED battery level display**

09

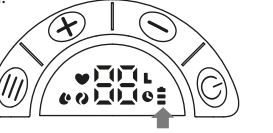
1. There are three power levels displayed on the breast pump.



2. During use, if the power display is at only 1 bar and is blinking, it indicates that the battery is running low. Make sure to charge it in time.



3. The device cannot be used while charging, at this time the display interface only shows the current power level. When the battery level shows 3 bars and does not flash, it means the battery is fully charged.



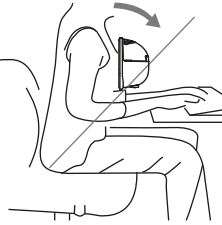
4. After each use, press the power button to check the battery indicator. If the display indicates low battery level, charge it using a DC5V=1A charger



**Breastfeeding posture instructions**

10

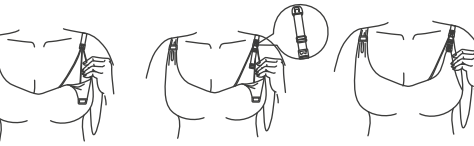
Relax and sit in a comfortable chair, then lean slightly forward (use a cushion for back support). Make sure your body and the breast pump are aligned.



Breastfeeding posture

**Instructions regarding the bra adjusting buckle**

Adjust the length of your bra straps in order to make suction more comfortable. Hang one end of the bra adjustment buckle on the inside buckle of the nursing bra. The length of the bra buckle can be adjusted by hanging the nursing bra buckle on the other end of the bra adjustment buckle.



Picture 1

Picture 2

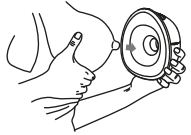
Picture 3

**End of pumping session**

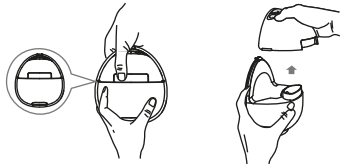
11

After you finish pumping, remove the breast pump from the breast. Keep the breast pump upright and remove the motor part. Hold the milk collector to pour the breast milk into the bottle. Make sure the milk collector gap of the breast cup is aligned with the mouth of the bottle to prevent spilling the breast milk.

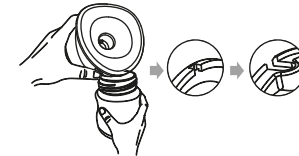
1. When you finish expressing, press the power button to turn the device off and break the seal between the breast and the pump funnel with your finger, and then carefully remove the pump from your breast.



2. Separate the milk collector from the pump motor to prepare it for feeding/storage. Clean the other used parts pursuant to the instructions.



3. Pour the milk into the bottle; Make sure the slot is aligned with the mouth of the bottle.



**Cleaning**

12

**Cleaning & maintenance**

	First Time Use	After Each Use
Pump Body	-	Wipe with a clean damp cloth with 70% ethyl alcohol or isopropyl alcohol as needed. Do not immerse the breast pump in water.
Flange, Silicone Diaphragm, Valve and Milk Collector	Boil in water for 5 minutes. Do not put the following parts into a microwave: Flange, Silicone Diaphragm, Valve and Milk Collector	Clean with mild dishwashing detergent or clean water.

**Cleaning**

13

**BE ADVISED**

- Be careful when dismantling and cleaning the valve; if the valve is damaged, the breast pump will not work properly.
- To clean the valve, please rub it gently in warm water with a few drops of cleaning detergent. Do not insert any objects into the valve as it might damage the device.

**Cleaning by hand**

- Place breast pump parts in a clean basin used only for infant feeding items. Do not place the breast pump parts directly in the sink.
- Add detergent and hot water to the basin.
- Scrub items using a clean brush used only for infant feeding items.
- Rinse by holding items under running water, or by submerging them in clean water in a separate basin.
- Air-dry thoroughly. Place the breast pump parts, the basin, and the bottle brush on a clean, unused dish towel or paper towel in an area protected from dirt and dust. Do not use a dish towel to rub or pat the items dry.
- Clean the basin and the bottle brush. Rinse them well and allow them to air-dry after each use. Wash them by hand at least every few days.

**Storing breast milk**

14

**Storing breast milk**

1. Only store breast milk collected using sterilized breast pumps.
2. The extracted milk can be placed in a clean and sterilized milk storage bag or a milk bottle with a sealing cushion, and immediately placed in the refrigerator.

**Be advised**

1. Do not freeze breast milk more than once.
2. Do not mix fresh breast milk with frozen breast milk.
3. Be sure to discard leftover breast milk after feeding.
4. The extracted milk can be stored in the refrigerator for 48 hours or in the freezer for up to three months. Label the milk bottle or the milk storage bag with a clearly marked date and time.

**How to thaw breast milk**

Place the frozen breast milk in the refrigerator compartment overnight to thaw. If you need to use frozen milk urgently, you can use a bowl of hot water to thaw breast milk. After thawing breast milk, it must be consumed within 24 hours.

**How to warm breast milk**

1. Place the baby bottle in a bowl of hot water or heat the breast milk safely and quickly using a bottle and food warmer.
2. Be advised! Before feeding your baby, make sure to check the temperature of the breast milk.

**innogio**

Manufactured in China for **INNOGIO** sp. z o.o.  
Ostródzka street 74H, 03-289 Warsaw, Poland

[www.innogio.com](http://www.innogio.com)

@innogio.official @innogio\_com

